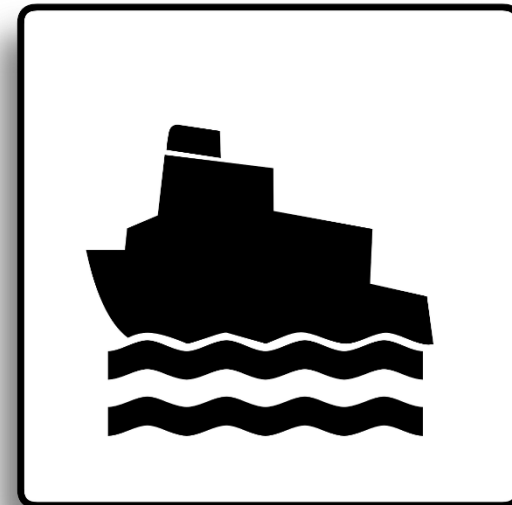
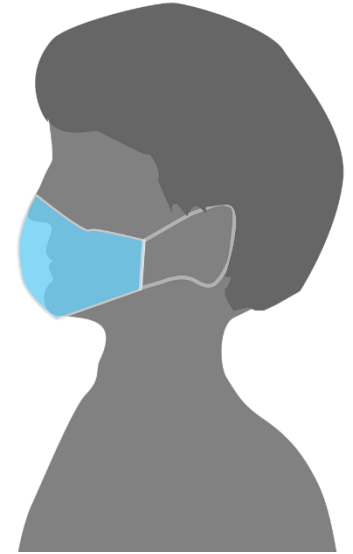
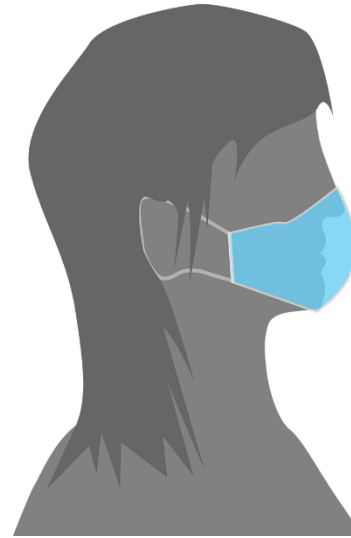
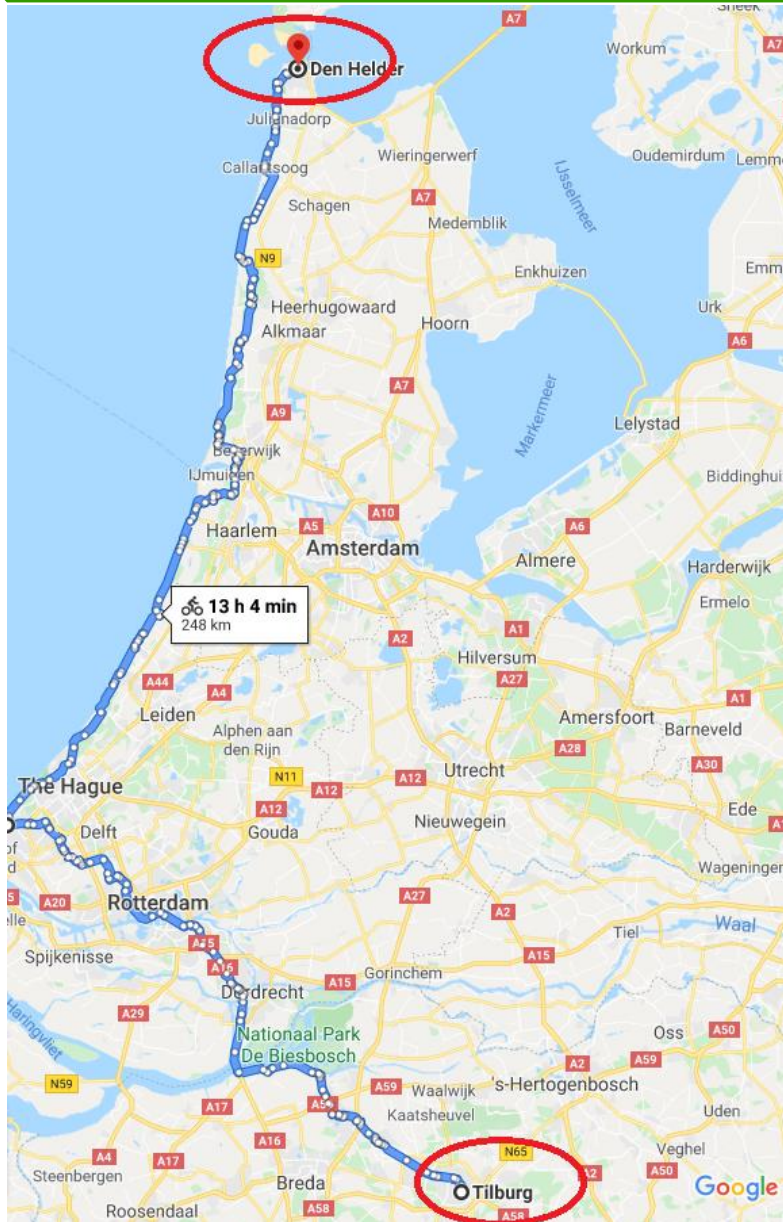


Uncertainty in research and its consequences

Robbie C.M. van Aert

Tilburg University
Department of Methodology and Statistics

My vacation



Face masks: Timeline

Jan 29	WHO: <i>“Wearing face masks provides a false sense of security”</i>

Face masks: Timeline

Jan 29	WHO: <i>“Wearing face masks provides a false sense of security”</i>
March 19	WHO: <i>“A face mask is not required for people who are not ill”</i>

Face masks: Timeline

Jan 29	WHO: <i>“Wearing face masks provides a false sense of security”</i>
March 19	WHO: <i>“A face mask is not required for people who are not ill”</i>
April 8	ECDC: <i>“The use of face masks should be considered in crowded areas”</i>

Face masks: Timeline

Jan 29	WHO: <i>“Wearing face masks provides a false sense of security”</i>
March 19	WHO: <i>“A face mask is not required for people who are not ill”</i>
April 8	ECDC: <i>“The use of face masks should be considered in crowded areas”</i>
April 16	RIVM: <i>“Face masks do not have added value on top of keeping distance and high quality hand hygiene”</i>

Face masks: Timeline

Jan 29	WHO: <i>“Wearing face masks provides a false sense of security”</i>
March 19	WHO: <i>“A face mask is not required for people who are not ill”</i>
April 8	ECDC: <i>“The use of face masks should be considered in crowded areas”</i>
April 16	RIVM: <i>“Face masks do not have added value on top of keeping distance and high quality hand hygiene”</i>
June 1	Research: <i>“Face masks may largely reduce the risk of being infected”</i>

Face masks: Timeline

Jan 29	WHO: <i>“Wearing face masks provides a false sense of security”</i>
March 19	WHO: <i>“A face mask is not required for people who are not ill”</i>
April 8	ECDC: <i>“The use of face masks should be considered in crowded areas”</i>
April 16	RIVM: <i>“Face masks do not have added value on top of keeping distance and high quality hand hygiene”</i>
June 1	Research: <i>“Face masks may largely reduce the risk of being infected”</i>
June 5	WHO: <i>“Governments are advised to encourage the use of face masks when keeping distance is difficult”</i>

Face masks: Timeline

Jan 29	WHO: <i>"Wearing face masks provides a false sense of security"</i>
March 19	WHO: <i>"A face mask is not required for people who are in public areas"</i>
April 8	ECDC: <i>"The use of face masks should be encouraged in public areas"</i>
April 16	RIVM: <i>"Face masks are not recommended on top of keeping distance and hand hygiene"</i>
June 11	WHO: <i>"Face masks may largely reduce the risk of being infected"</i>
June 5	WHO: <i>"Governments are advised to encourage the use of face masks when keeping distance is difficult"</i>
August 3	WHO: <i>"Keep distance, wear a face mask, clean your hands and coughing safely away from others. Do it all."</i>

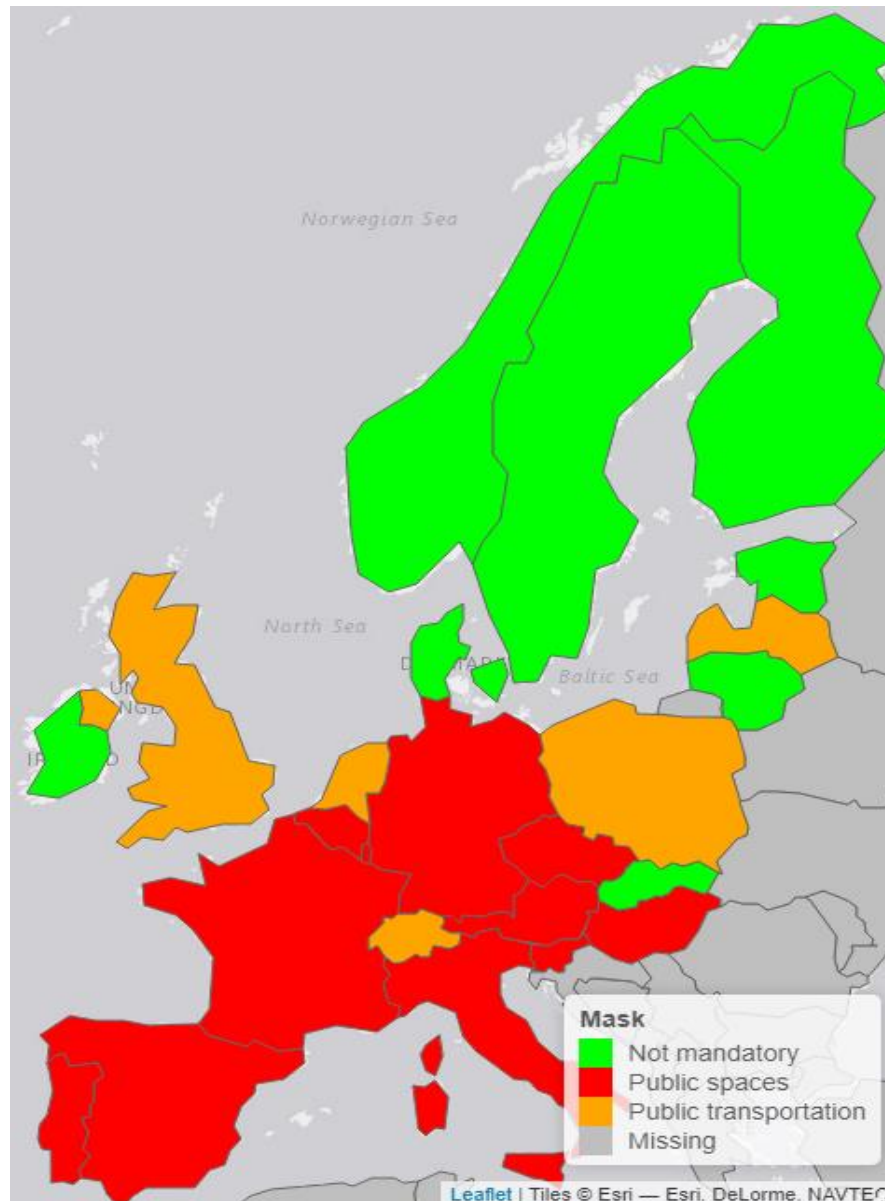
A lot of uncertainty in research

Prime minister

“Policy making is now sailing a ship in very foggy conditions”



Face masks policy: Europe



Is this uncertainty common in research?

- Yes, definitely, but...
- ... it is not always acknowledged
- Replications to assess the uncertainty in research
- Percentage of successful replications
 - Psychology → about 36.1% (35/97)
 - Economics → about 68.8% (11/18)
 - Hematology and oncology → about 11.3% (6/53)

Why should we care?

- Society/politicians:
 - Not acknowledging uncertainty → lower trust of science
 - Policy-making

- Students:
 - Well... you want to learn stuff that is correct
 - Some findings that could not be replicated are in psychology textbooks

Take-home messages

1. Research is the foundation for policy makers and teachers (I hope)
2. There is always uncertainty in research
3. Question what you learn → teachers like this ;-)

But, most important: Enjoy your time as a student!

Thank you for your attention

www.robbievanaert.com

R.C.M.vanAert@tilburguniversity.edu